



IUSS

Scuola Universitaria Superiore Pavia

Il Progetto ERC PROMENADE

Valentina Bambini

PROMENADE



PROcessing **ME**taphors:
Neurochronometry, **A**cquisition, **DE**cay

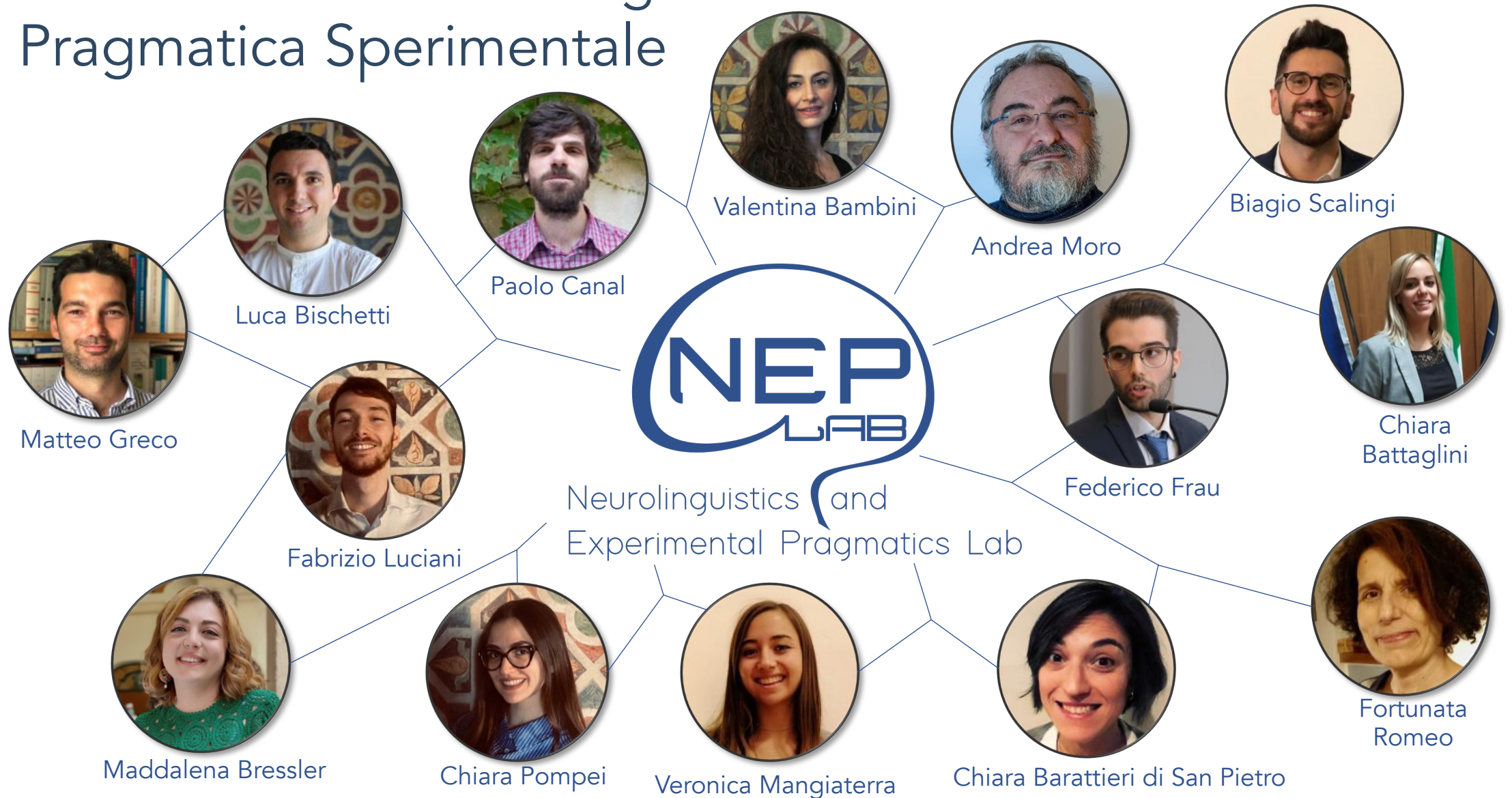


Funded by
the European Union

erc
European Research Council
Established by the European Commission

www.iusspavia.it

Il Laboratorio di Neurolinguistica e Pragmatica Sperimentale



Metafora



«Stracci di nubi...»

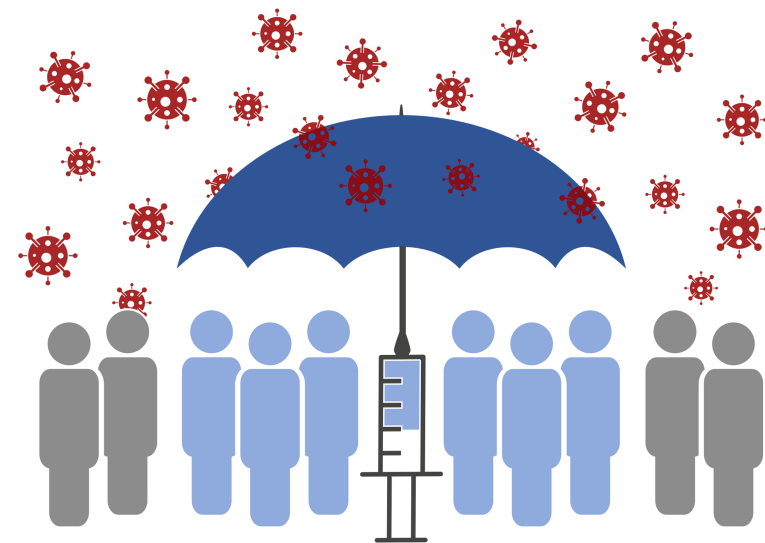
«Finestra dell'anima...»

«Miele dell'oblio...»

Giovanni Pascoli

«Il vaccino è un ombrello con i buchi,
ma è l'unico ombrello che abbiamo»

Massimo Galli

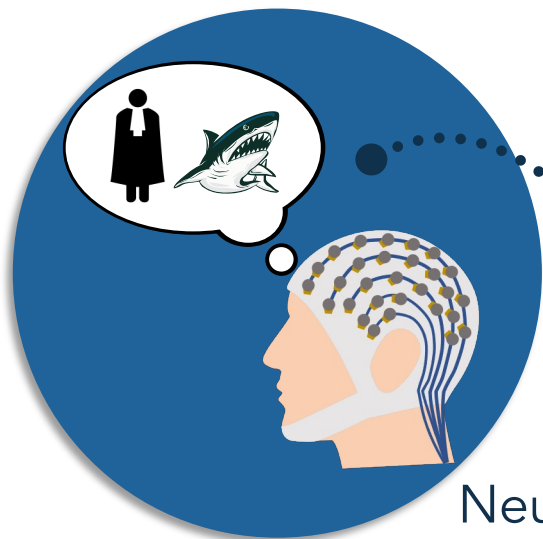




Acquisition

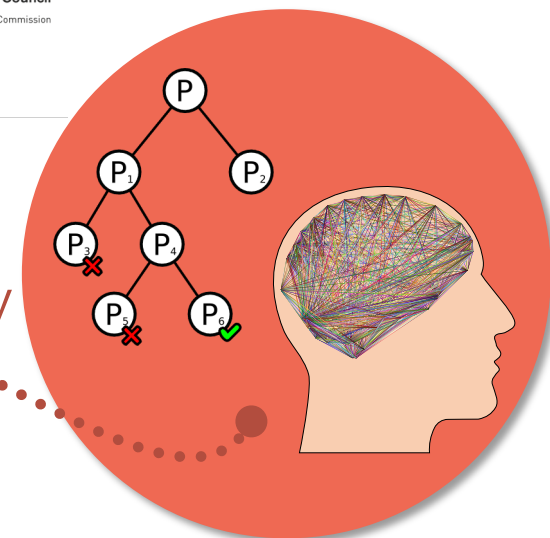
PROMENADE

PROcessing MEtaphors:
Neurochronometry, Acquisition, DEcay



Neurochronometry

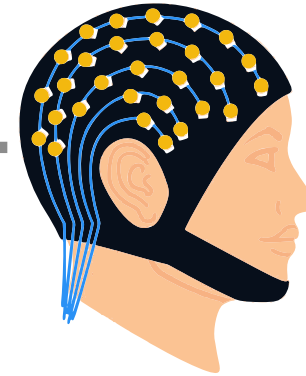
Decay



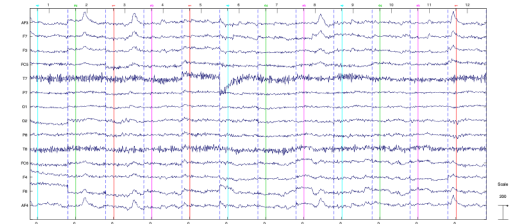
Prospettiva neurofunzionale



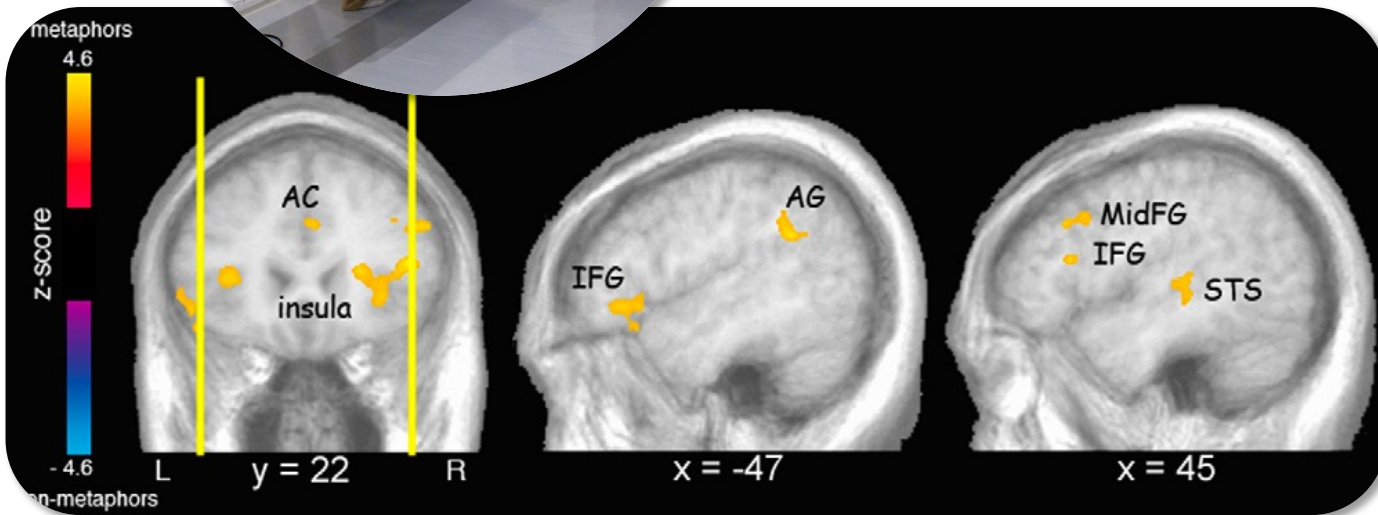
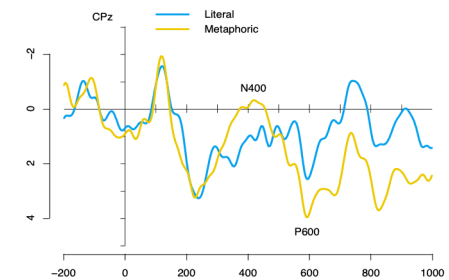
Metafora



Registrazione EEG



ERP



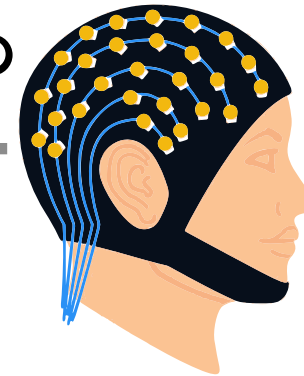
Bambini et al. (2011), *Brain Research Bulletin*

Canal et al. (2022), *Brain and Cognition*

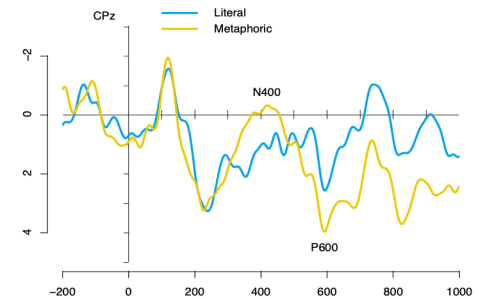
Prospettiva neurofunzionale



«Stracci di nubi»



ERP



Prospettiva dello sviluppo

6 mesi	Inizio babbling
1 anno	Alcune parole (o frammenti); inizio comprensione (proprio nome, toni)
1 anno e ½	Vocabolario di 30-50 parole (soprattutto nomi), produzione di olofrasi; comprensione maggiore
2 anni	200-300 parole, frasi di due parole (nome-verbo); comprensione di comandi
2 anni e ½	Frasi più complesse, molti errori grammaticali ed espressioni idiosincratiche, buona comprensione
3 anni	Circa 1000 parole, frasi complete, pochi errori
4 anni	Quasi come gli adulti...



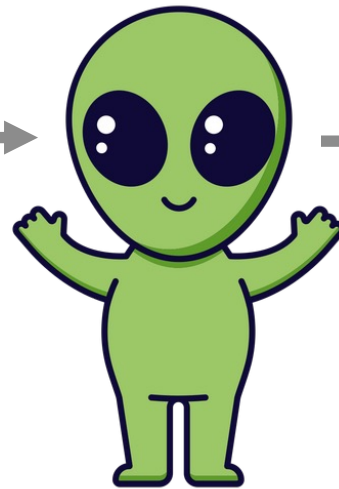
Lecce, Ronchi, Del Sette, Bischetti & Bambini (2019), *Journal of Child Language*

Prospettiva dello sviluppo

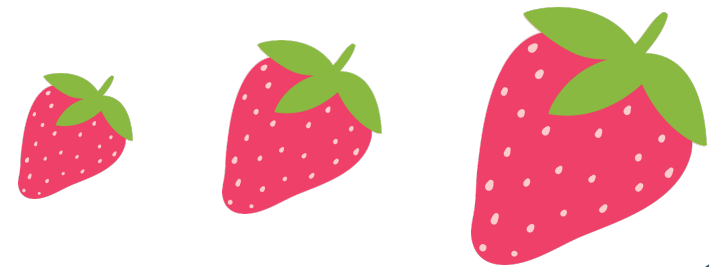
«Quell'alunno è una spugna perché beve tanta acqua»



Registrazione EEG



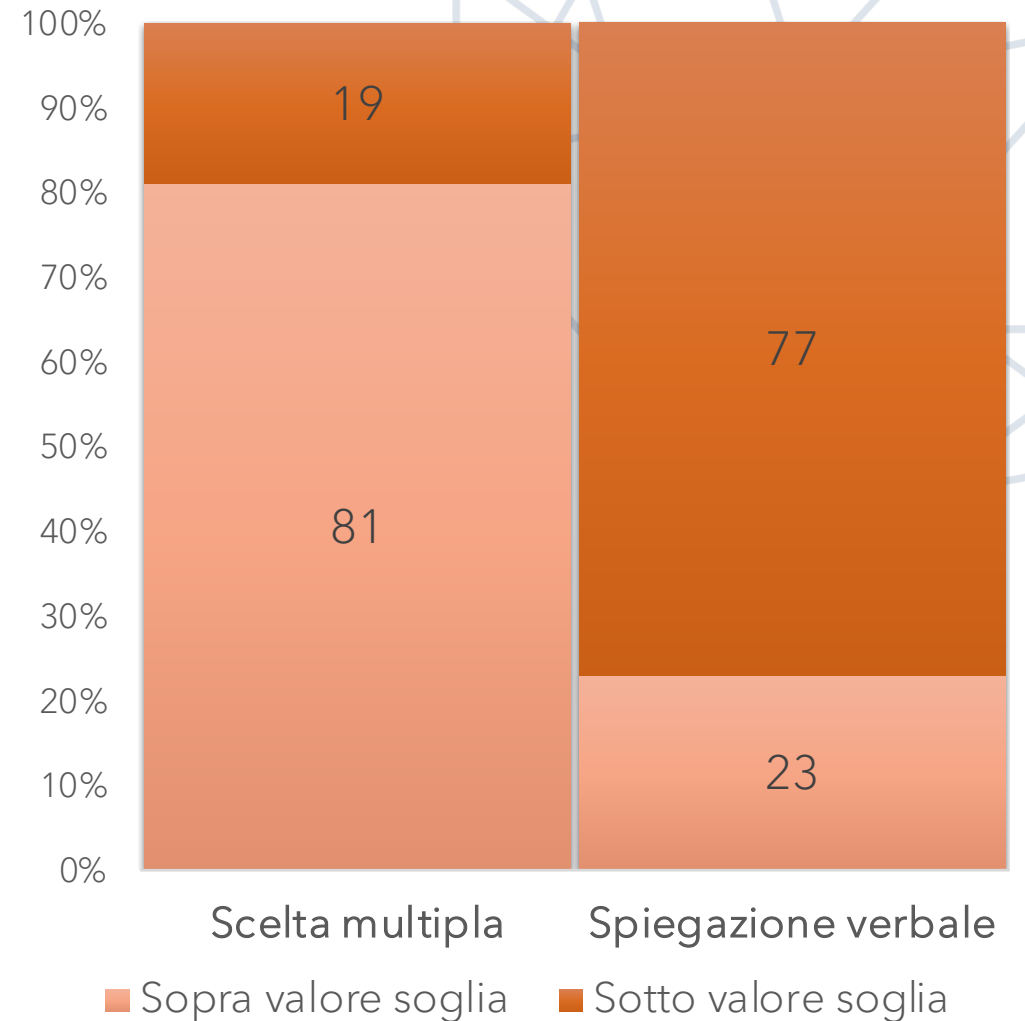
Quale fragola dai all'alieno per premiarlo?



Prospettiva clinica

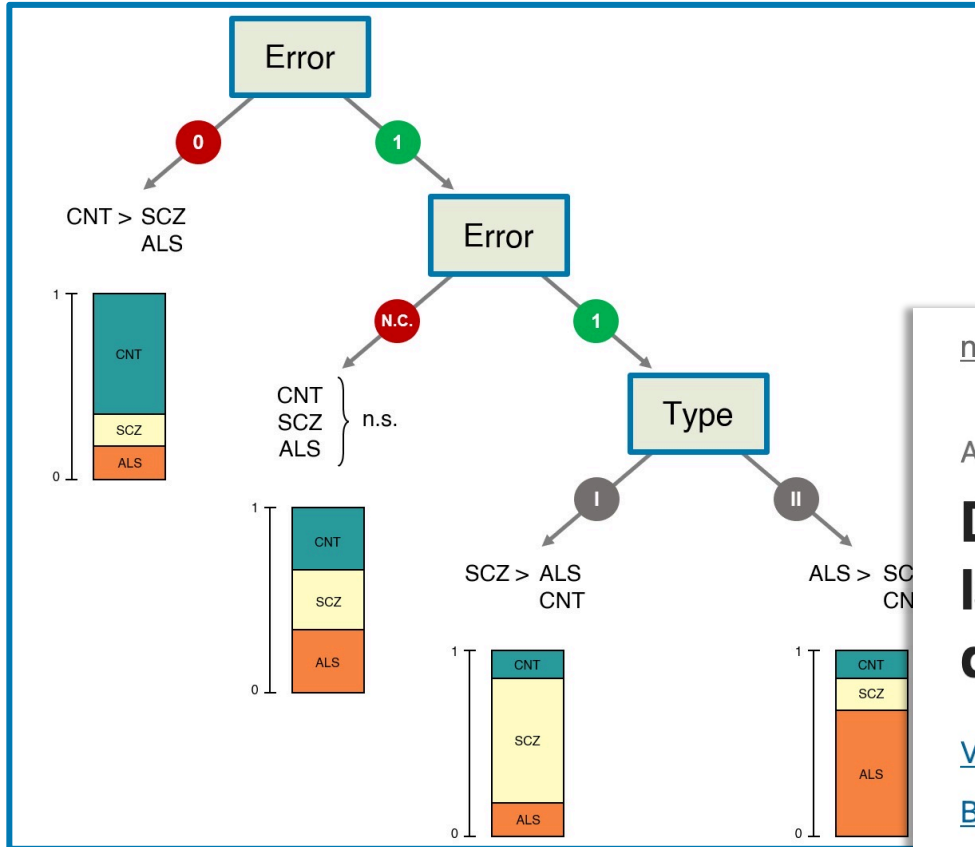


Bambini, Arcara, Bechi, Buonocore, Cavallaro & Bosia (2016),
Comprehensive Psychiatry



Bambini et al. (2020), *Neuropsychologia*

Prospettiva clinica



[nature](#) > [schizophrenia](#) > [articles](#) > [article](#)

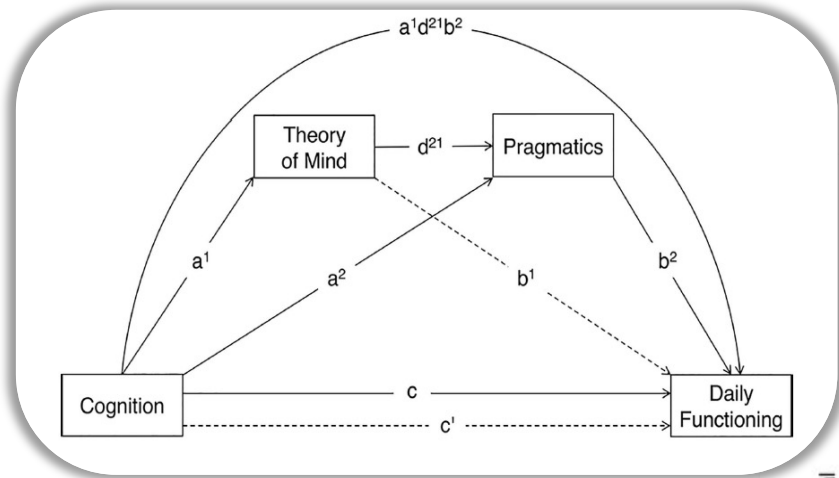
Article | [Open access](#) | [Published: 29 November 2022](#)

Deconstructing heterogeneity in schizophrenia through language: a semi-automated linguistic analysis and data-driven clustering approach

[Valentina Bambini](#) , [Federico Frau](#), [Luca Bischetti](#), [Federica Cuoco](#), [Margherita Bechi](#), [Mariachiara Buonocore](#), [Giulia Agostoni](#), [Ilaria Ferri](#), [Jacopo Sapienza](#), [Francesca Martini](#), [Marco Spangaro](#), [Giorgia Bigai](#), [Federica Cocchi](#), [Roberto Cavallaro](#) & [Marta Bosia](#)

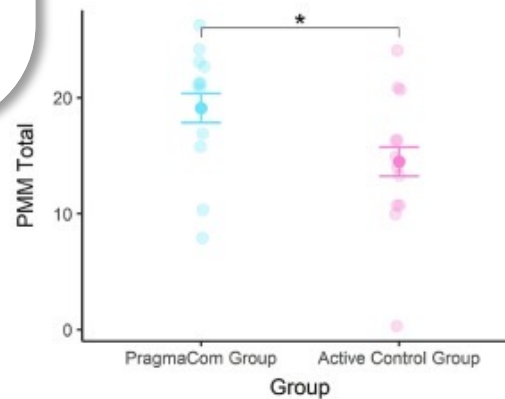
[Schizophrenia](#) **8**, Article number: 102 (2022) | [Cite this article](#)

Impatto - clinica

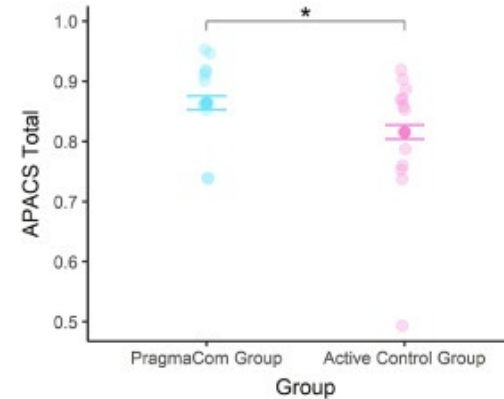


Agostoni et al. (2021), *Neuropsychology*

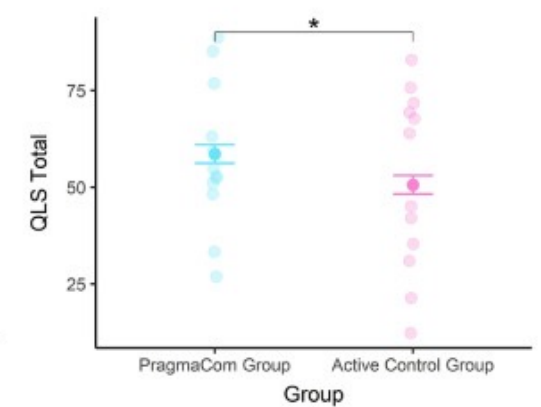
Physical and Mental Metaphors (PMM)



Assessment of Pragmatic Abilities and Cognitive Substrates (APACS)



Quality of Life Scale (QLS)



Dopo il controllo a tre mesi

Bambini et al. (2021), *Journal of Communication Disorders*

Impatto - clinica



Sistema Socio Sanitario



FONDAZIONE
MONDINO

Istituto Neurologico Nazionale
a Carattere Scientifico | IRCCS



SAN CAMILLO IRCCS SRL

VELUX STIFTUNG



Impatto - sviluppo

The Journal of Child
Psychology and Psychiatry

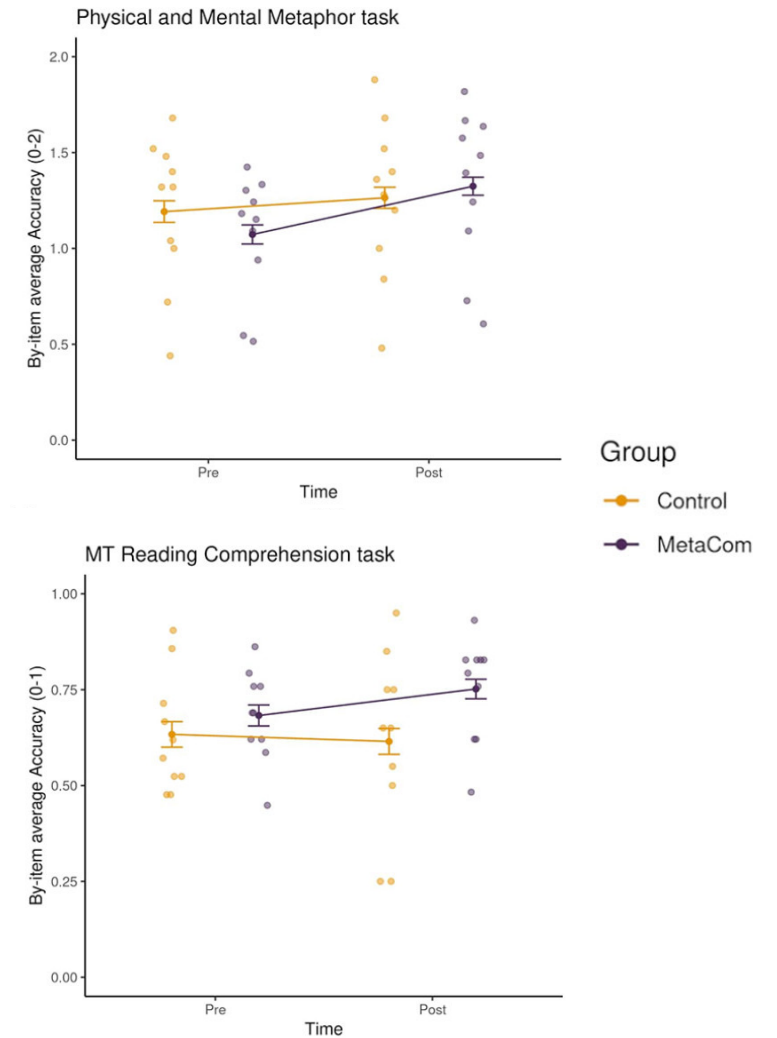


Original Article | Open Access |

The impact of nonverbal ability on prevalence and clinical presentation of language disorder: evidence from a population study

Courtenay Frazier Norbury , Debbie Gooch, Charlotte Wray, Gillian Baird, Tony Charman, Emily Simonoff, George Vamvakas, Andrew Pickles

First published: 16 May 2016 | <https://doi.org/10.1111/jcpp.12573> | Citations: 482



Tonini et al. (2022), *First Language*

Impatto - sviluppo



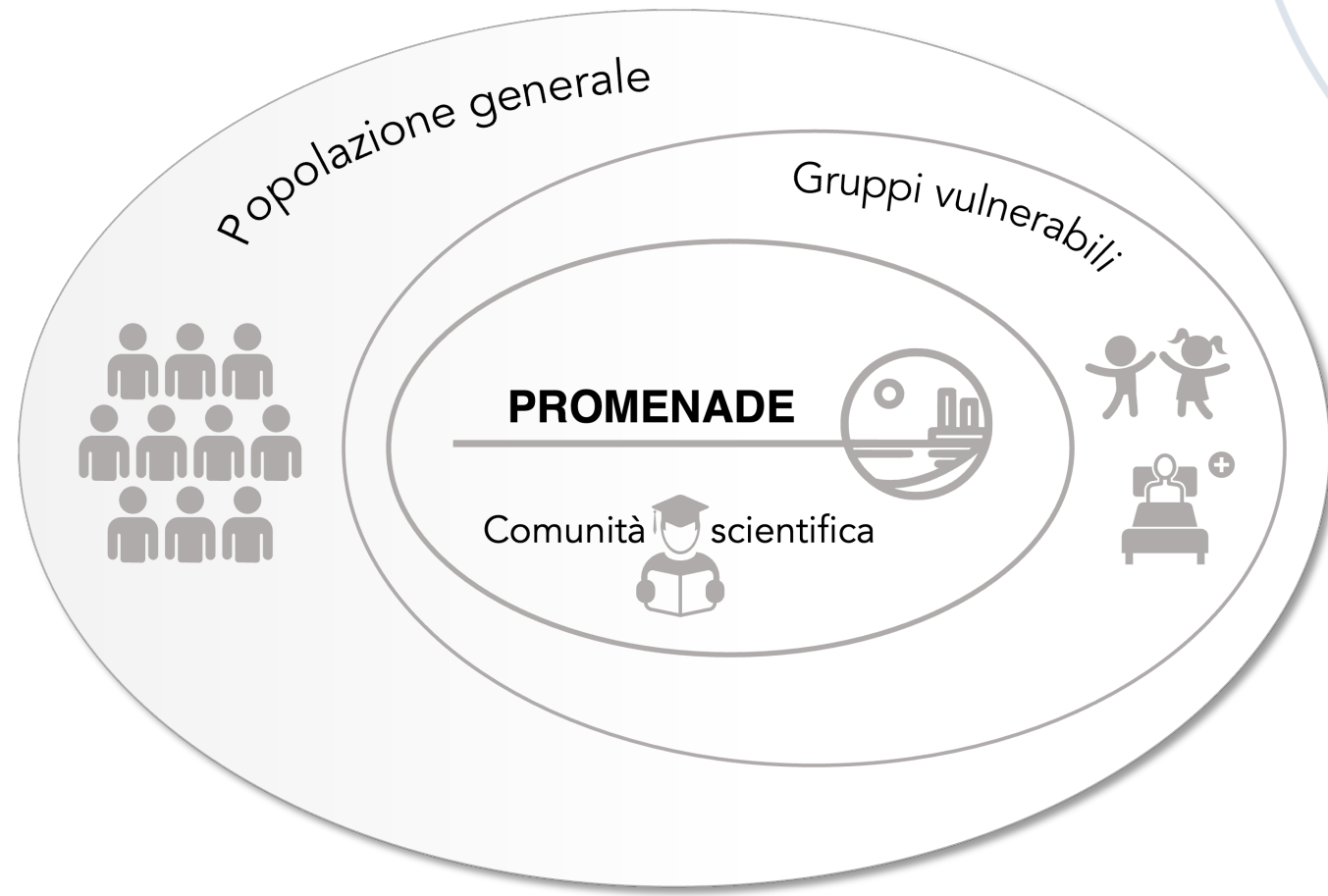

**TRECCANI
CULTURA**
FONDAZIONE



**Istituto
San Giorgio**

**IND
IRE** ISTITUTO
NAZIONALE
DOCUMENTAZIONE
INNOVAZIONE
RICERCA EDUCATIVA

Dalla metafora alla società del futuro



*«La lingua è dentro di te,
tu sei tra le sue braccia»*

Mario Luzi



IUSS Scuola Universitaria Superiore Pavia

Palazzo del Broletto
Piazza della Vittoria 15
27100 Pavia (Italy)
Tel: +39 0382 375811
Email: info@iusspavia.it



www.iusspavia.it